



Mphasis Hi-Tech

Trust. Partnership. Innovation. Delivered.

Technology companies are constantly evolving their products and reimagining their business models to adapt their hardware or software offerings to the changing needs of their customers. At Mphasis, we are at the forefront of adopting next-gen technologies and rapid product innovation to offer our clients competitive differentiation and faster time-to-market. Our clients leverage our depth in Product Engineering to ensure success, continuously innovate on their hardware and software products, work on parallel product versions and incorporate next-gen technologies. Our domain-centric, offerings-led solution frameworks and globally distributed agile teams transform our engagement with Hi-Tech companies as we become trusted partners on their innovation journey.

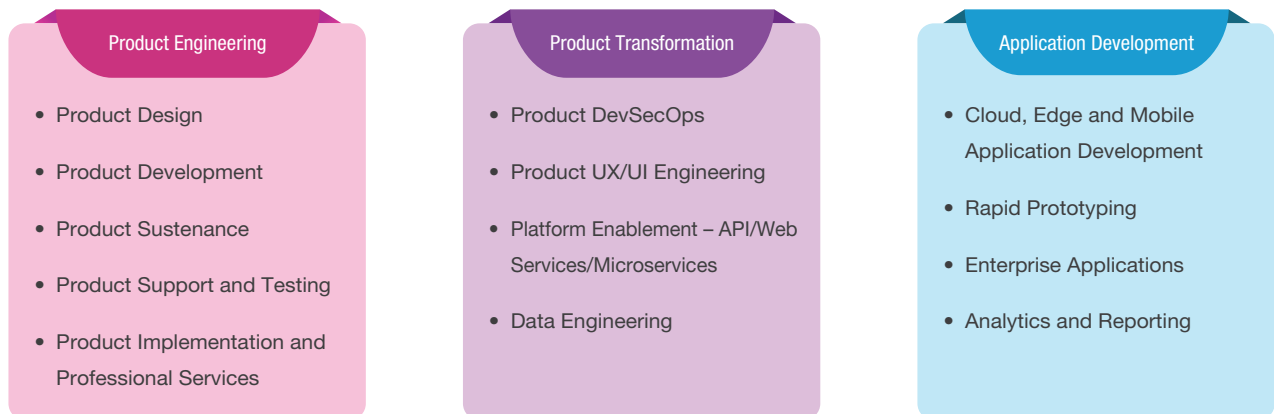
Overview

Mphasis Hi-Tech is uniquely qualified to engage in all phases of product lifecycle management including concept, definition, architecture, development, validation, deployment, sustenance and end-of-life. We deliver value by establishing trust and becoming the extended engineering and services partner complemented by our cognitive and cloud-powered NEXT Labs - the Mphasis' research and innovation arm, and NextSTEP™ platform that hosts Mphasis' IP assets across all service types and offerings.

Highlights

- 25 years of expertise in Product Engineering, Product Transformation and Application Development
- Over 2,000 projects successfully executed
- Over 4,000 enterprise hardware and software products launched
- Over 2,000 highly skilled product engineers
- 20,000 sq. ft. of client certified, fully equipped, state-of-the-art labs
- Flexible agile engagements from product prototypes to development and final shipment

Hi-Tech Services



Product Engineering

Mphasis Product Engineering enables product co-innovation - from conceptualizing, designing and development of futuristic technologies to creating next-generation products and solutions, spanning from design through implementation and final release, followed by its sustenance. Our disruptive and breakthrough innovations across cognitive and cloud provide the best accelerators for AI-enabled Engineering Services for better ROI, razor focused on business value and end user experience for tomorrow's products. Our deep domain expertise in Engineering Services with investments in technology and labs, coupled with co-development model have resulted in long association with our top clients. A multi-phase delivery model, giving clients the option to explore technology options and feasibility, helps in end-to-end product development and release ownership.

Product Transformation

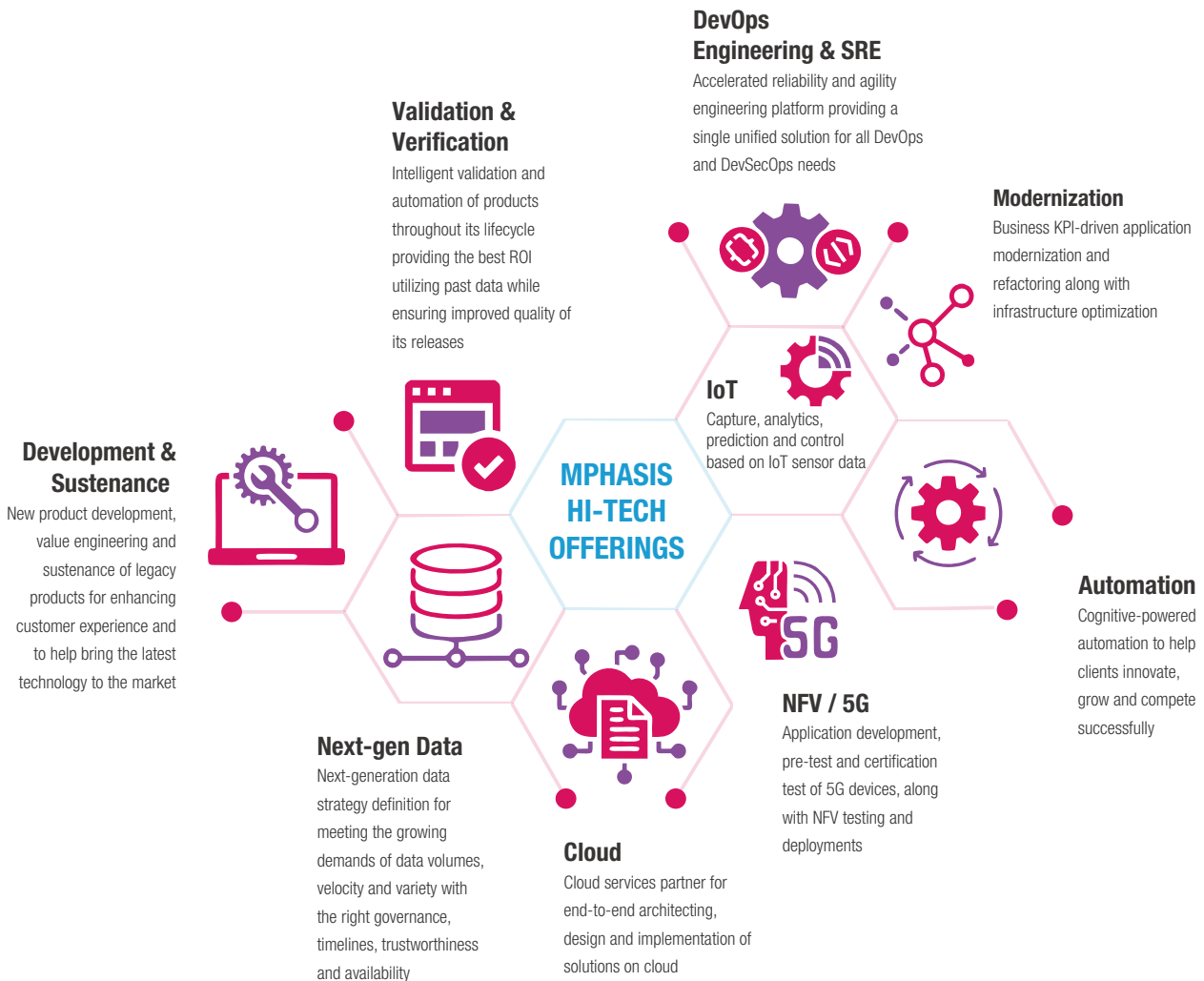
Mphasis Product Transformation services enable previous or current generation technology products to imbibe the next-generation technology and processes for faster release and deployment, while improving the end customer experience. Our services enable companies to refresh their product's user experience, introduce security early into the development through DevSecOps processes, harness the data for better insights and platform-enable the products to work across the ecosystem.

Application Development

Mphasis Application Development services enable quick refactoring of enterprise applications to address critical issues and enable faster bug-fixes turnaround and application rollouts. Our services help companies collaboratively define new architecture and prototyping for next-generation product including cloud, end device and mobile application software.

Featured Hi-Tech Offerings

Mphasis focuses on core technologies to enable transformation of products and platforms to offer innovation to our clients. Our depth and adoption of next-gen technologies in these areas help us lead our client engagements as a preferred partner.



Industry Focus

Mphasis offers product lifecycle management support to the following industry verticals:

- Computing Systems
- Software Products and Internet Software
- Medical Devices and Analytical Instrumentation
- Consumer Electronics
- Semiconductors
- Industrial and Manufacturing

Our Differentiated Value Proposition

- Over 25 years of experience in releasing leading next-generation enterprise and commercial products
- Trusted and long term client relationships of 20+ years with highest quality of delivery
- Near perfect Client Satisfaction Scores and glowing client testimonials through consistent value in engineering contributions
- Innovative user experience along with accelerated time-to-market
- Rich ecosystem of 100+ technology partners bringing disruptive innovation to our clients through Sparkle Lab
- Global footprint of 60+ locations aiding flexible and agile delivery operations with local touchpoints alongside our clients
- Differentiated solutions developed in specialized research and innovation center (NEXT Labs), investing in next-gen technologies
- Transparent engagement and delivery models with single-pane visibility through enterprise dashboards

About Mphasis

Mphasis (BSE: 526299; NSE: MPHASIS) applies next-generation technology to help enterprises transform businesses globally. Customer centricity is foundational to Mphasis and is reflected in the Mphasis' Front2Back™ Transformation approach. Front2Back™ uses the exponential power of cloud and cognitive to provide hyper-personalized ($C = X2C_{in} = 1$) digital experience to clients and their end customers. Mphasis' Service Transformation approach helps 'shrink the core' through the application of digital technologies across legacy environments within an enterprise, enabling businesses to stay ahead in a changing world. Mphasis' core reference architectures and tools, speed and innovation with domain expertise and specialization are key to building strong relationships with marquee clients. To know more, please visit www.mphasis.com

For more information, contact: hi.tech@mphasis.com

USA

460 Park Avenue South
Suite #1101
New York, NY 10016, USA
Tel.: +1 646 424 5145

226 Airport Parkway
Suite 638
San Jose, CA 95110, USA
Tel.: +1 408 327 1240

UK

Mphasis UK Limited
1 Ropemaker Street, London
EC2Y 9HT, United Kingdom
Tel.: +44 020 7153 1327

INDIA

Bagmane World Technology Center
Marathahalli Ring Road
Doddanakundi Village
Mahadevapura
Bangalore 560 048, India
Tel.: +91 80 3352 5000

