



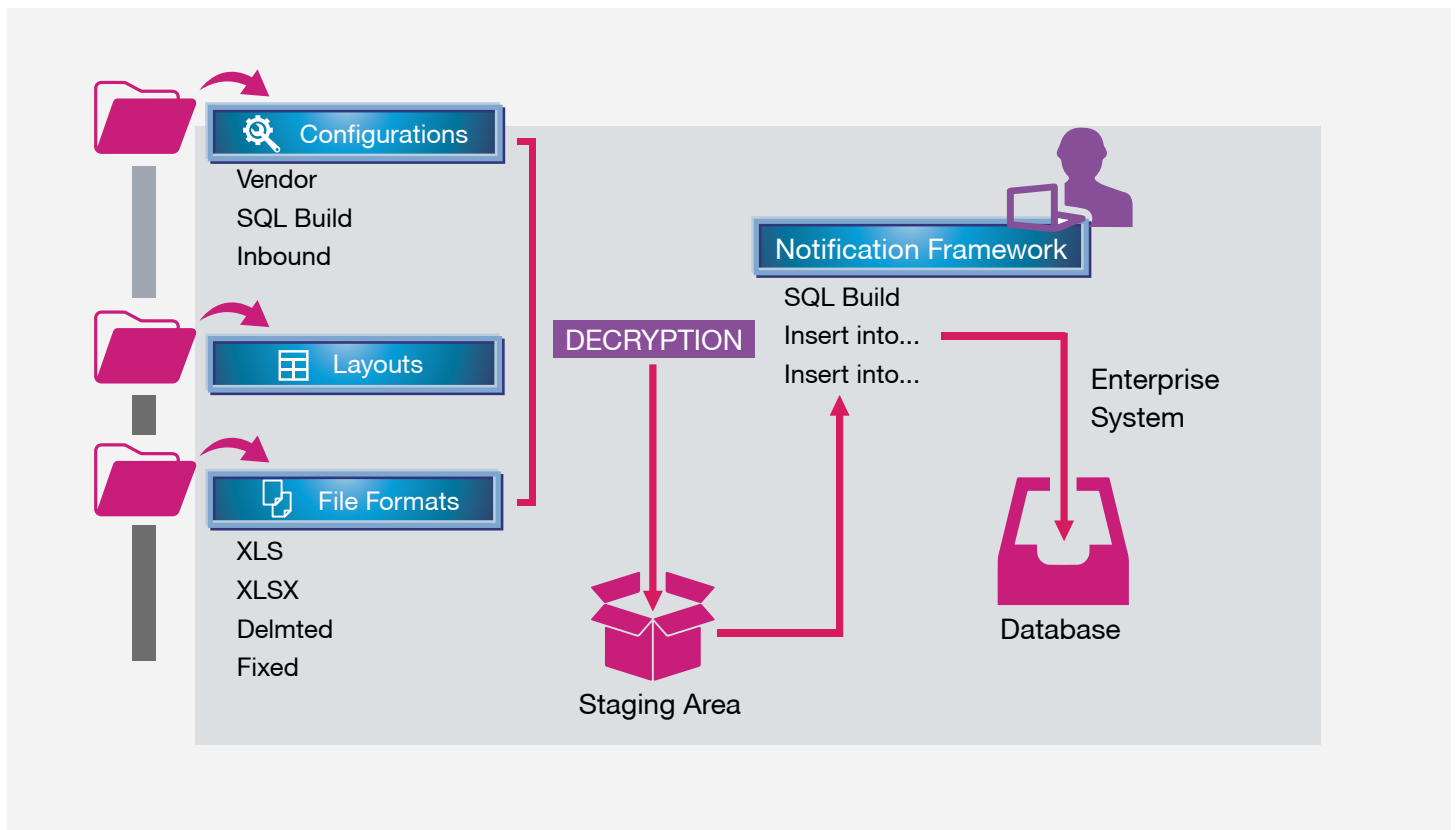
Common Integration Framework

Common Integration Framework is an important tool for managing multiple inbound and outbound data integration. A configuration based scalable architecture is necessary for handling future changes, such as data mapping, new interfaces etc. The tool should also be capable of handling all types of files.

How common integration framework can help the business?

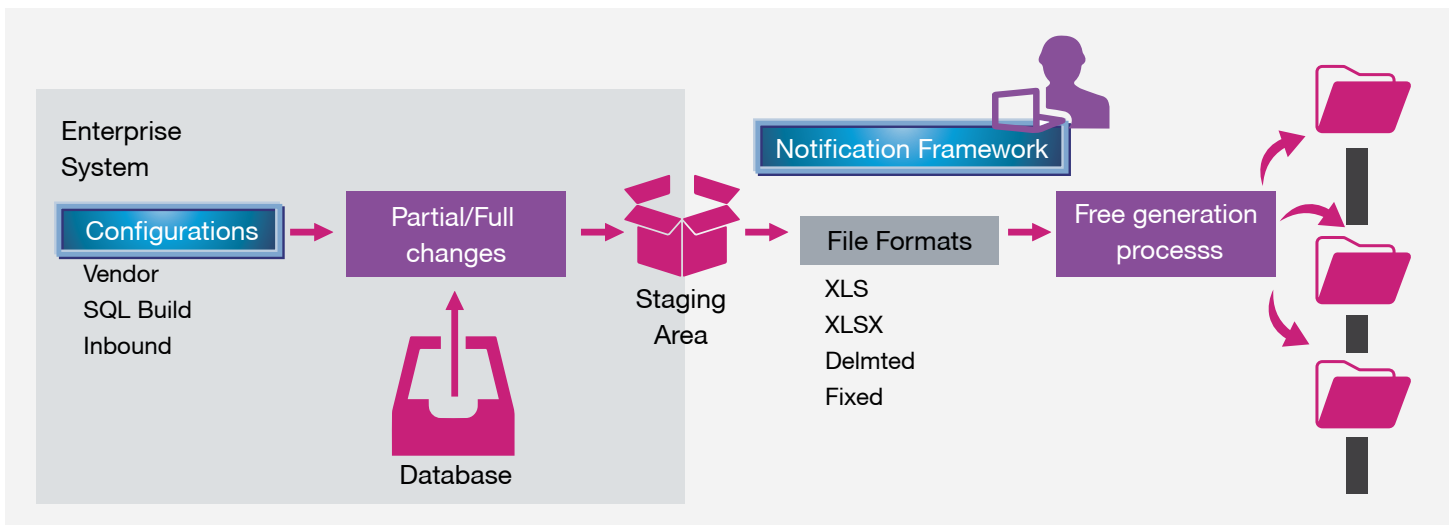
- Imports data and rectifies the problems at the time of integration
- Generates files using a scheduler/manually
- Sets up the configuration/maps value:
 - Adds and maps new fields even if received files have different formats
 - Adds fields if new information has to be updated in the core tables
- Ensures secured file transmission
- Validates processing duplicate files/fields and performs conditional checks
- Facilitates mail notification for success/failure
- Defines error handling mechanism
- Saves effort:
 - Approximately 40-50% reduction in effort required to build new interface program
 - Common error handling process and configuration ensures reusability (up to 90%)

Inbound



Reusable components for data integration, templates, business rules

Outbound



Reusable components for data integration, templates, business rules

Salient Features

Tool Usage

- SF LMS Implementation – required for data transfer integration from PeopleSoft to Success Factors and receive inputs into PeopleSoft
- GWS Implementation – required for data migration activities from and to PeopleSoft to other applications
- Taleo Implementation – used for data transfer integration from PeopleSoft to Success Factors and receive inputs into PeopleSoft

Future Usage and Enhancement Plan

- Taleo Phase2 implementation
- Next phase of GWS projects

Scheduled Enhancements

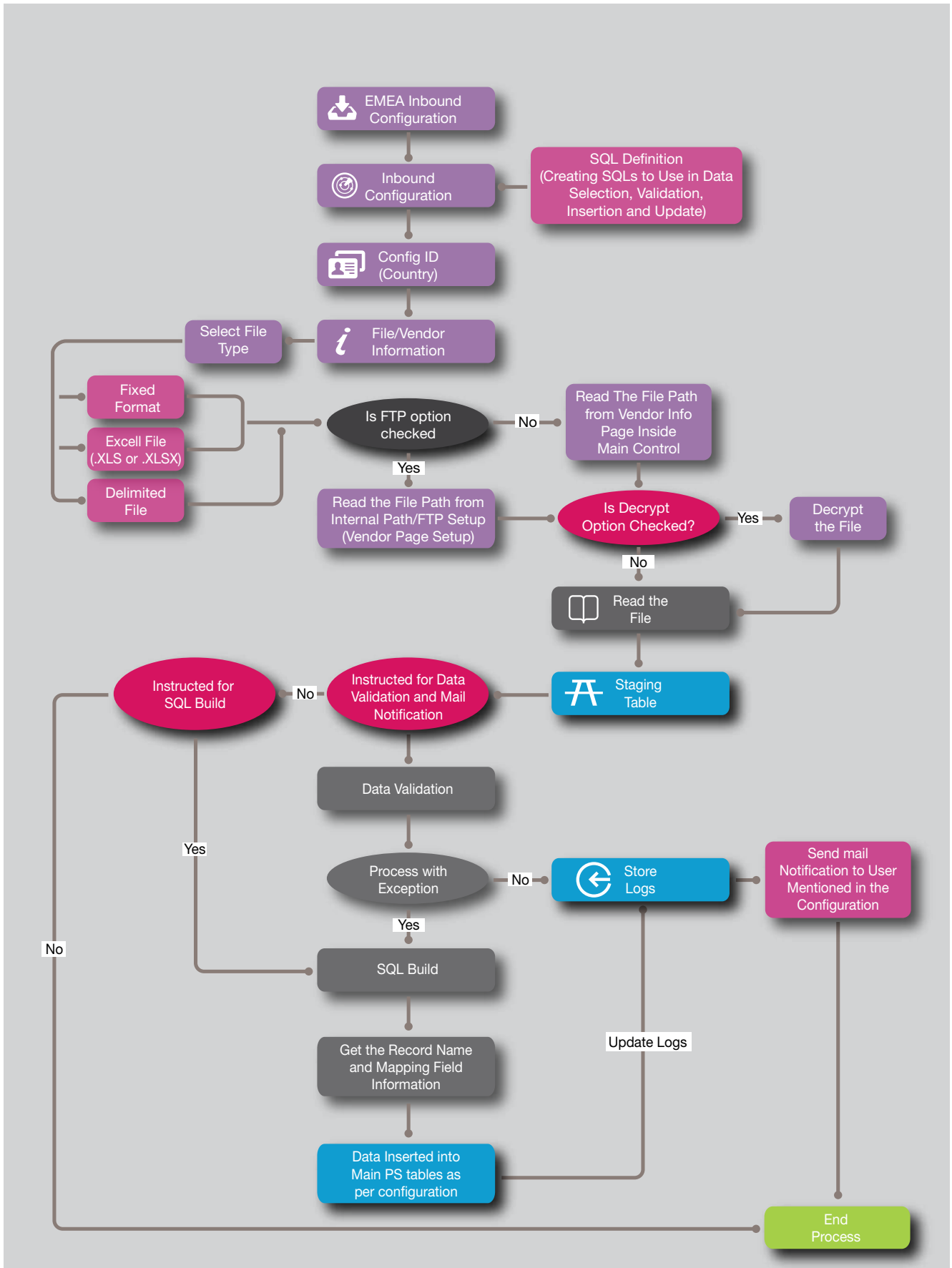
- To include BI Publisher as part of the output format

Methodology

Inbound Data

- Fetch parameters from the configuration table to identify the file path and number of files used in each region
- Ensure the configuration is done in a way that process can run in parallel for other entities as well. For example – China and Japan might run the process at the same time
- Process appropriate log files on Success or Failed Row information
- Move the processed files to an archive folder
- Avoid processing duplicate files by checking file parameters associated with the file as there might be a need to send more than one file in a day, for example same pay end date, bonus file and regular pay file
- Do not process if all the files for a region are not available in the CBRE server. For example – if earnings file is available but deduction file is not, error message must be displayed and the files for that region should not be processed.

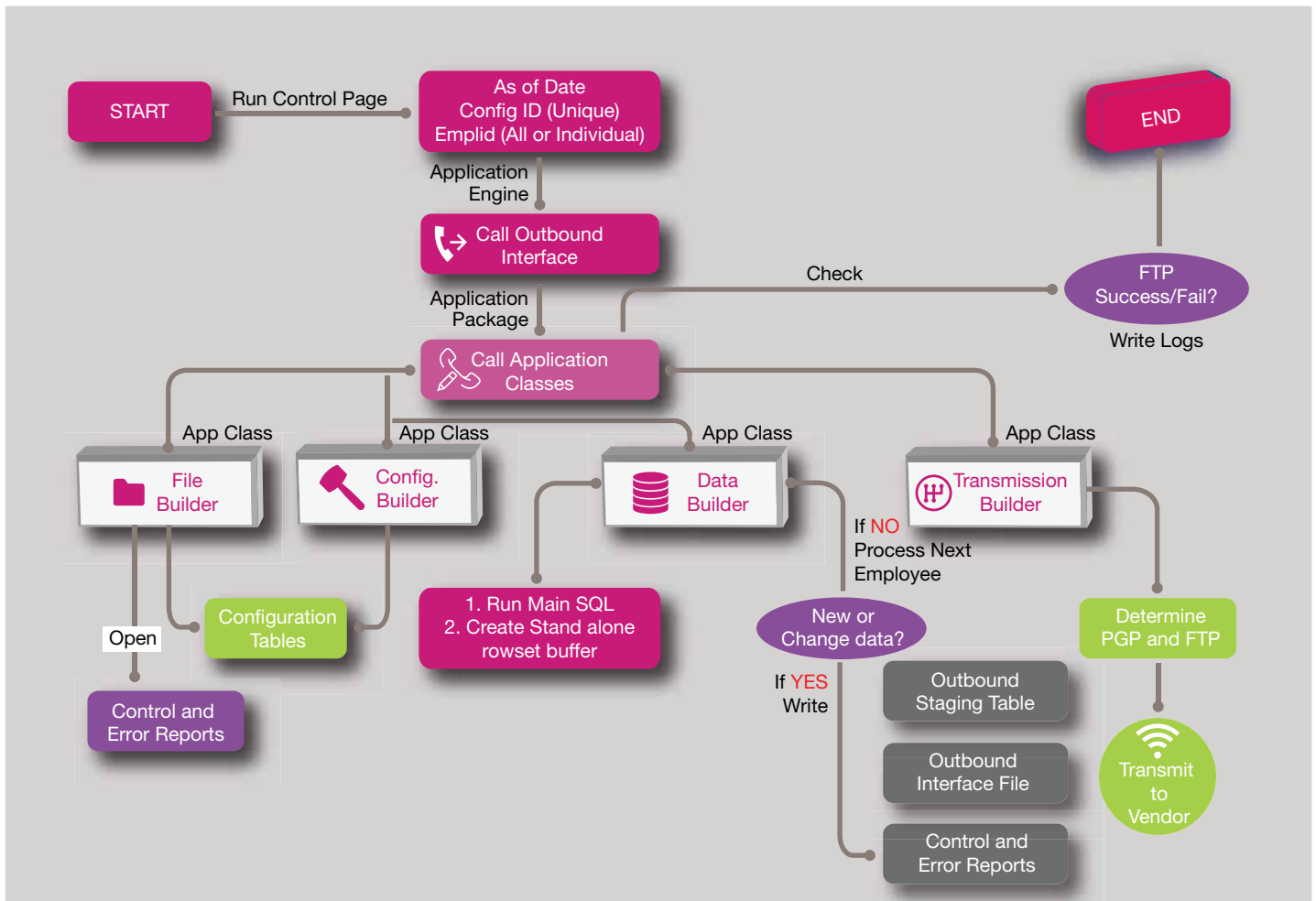
Inbound Flow



Outbound Data

- Configure data collection
- Configure outbound file parameters, such as file type, format, delimiters etc.
- Configure details required to create specific header and footer on the outbound file
- Configure additional CB parameters required to handle future changes
- Common Application engine to execute and extract data based on the configured parameters
- Extra data based on the region
- Execute data handling, common error logging and reporting

Outbound Flow





Adhi Sheshu Goud Gudisey

ERP Group Manager

Adhi Gudisey, currently working as a PeopleSoft SME, has 17+ years of experience across multiple PeopleSoft engagements. He implemented the process flow for support service using ITIL Framework. He leads and manages the delivery of the three product lines vis-à-vis Human Capital Management (HCM), Finance and Supply Chain Management (FSCM) and Portal Integration Hub (PIH).

About Mphasis

Mphasis (BSE: 526299; NSE: MPHASIS) applies next-generation technology to help enterprises transform businesses globally. Customer centricity is foundational to Mphasis and is reflected in the Mphasis' Front2Back™ Transformation approach. Front2Back™ uses the exponential power of cloud and cognitive to provide hyper-personalized ($C = X2C^2 = 1$) digital experience to clients and their end customers. Mphasis' Service Transformation approach helps 'shrink the core' through the application of digital technologies across legacy environments within an enterprise, enabling businesses to stay ahead in a changing world. Mphasis' core reference architectures and tools, speed and innovation with domain expertise and specialization are key to building strong relationships with marquee clients. To know more, please visit www.mphasis.com

For more information, contact: marketinginfo@mphasis.com

USA

460 Park Avenue South
Suite #1101
New York, NY 10016, USA
Tel.: +1 212 686 6655
Fax: +1 212 683 1690

UK

88 Wood Street
London EC2V 7RS, UK
Tel.: +44 20 8528 1000
Fax: +44 20 8528 1001

INDIA

Bagmane World Technology Center
Marathahalli Ring Road
Doddanakundhi Village
Mahadevapura
Bangalore 560 048, India
Tel.: +91 80 3352 5000
Fax: +91 80 6695 9942



VVL 18/07/19 US Letter BASIL 4 1/11