



Financials Presentation

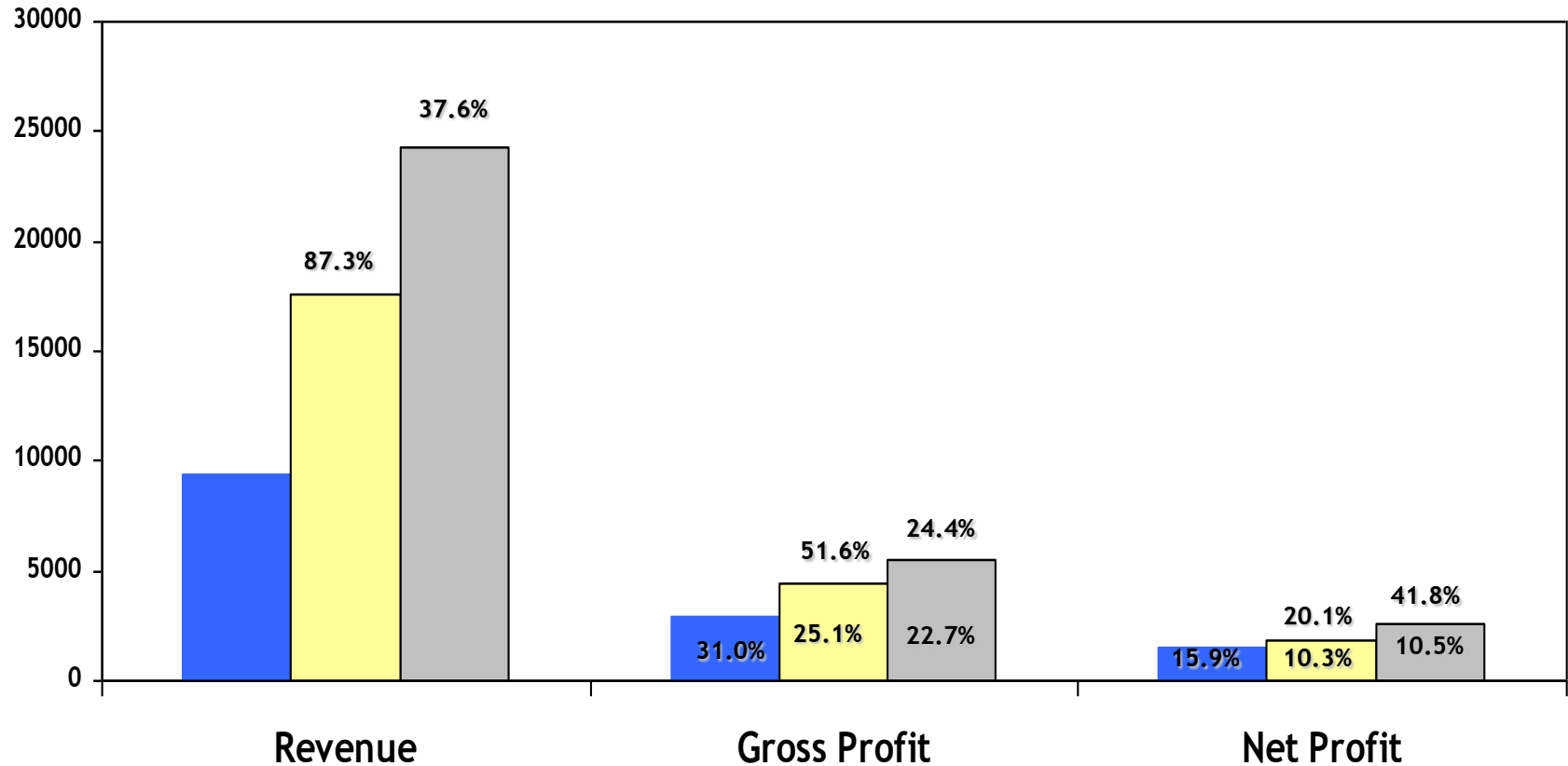
INR

Quarter ended 30 Jun 2008

Bangalore : 25 Jul 2008

2006-08 At A Glance - Group

(Rs million)



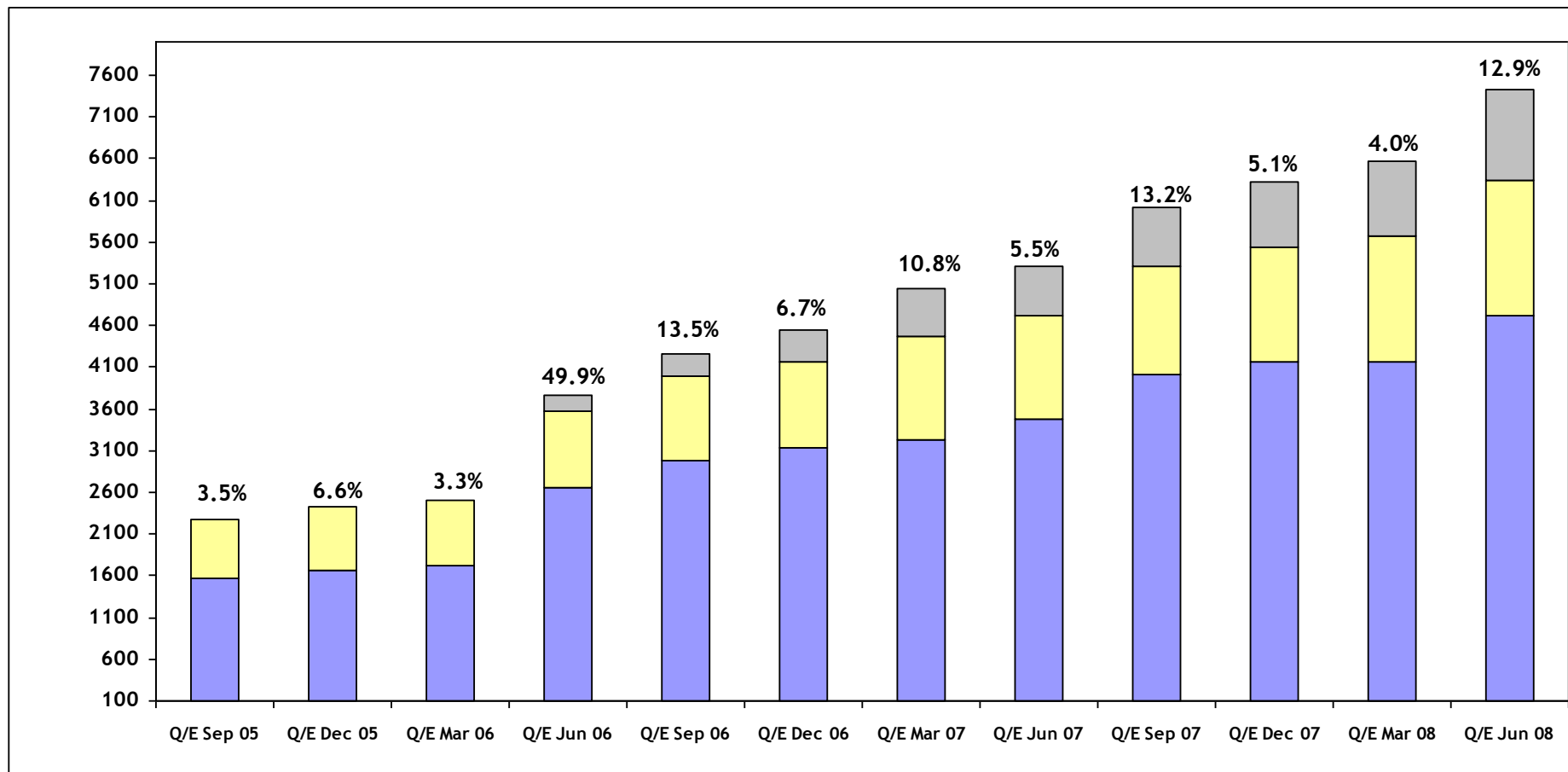
2007-08*	24,230.7	5,494.9	2,552.8
2006-07*	17,606.2	4,418.5	1,800.7
2005-06	9,401.1	2,915.4	1,498.6

* EDS India figures are consolidated w.e.f. 1 April 2006

Financials Presentation – quarter ended 30 Jun 2008

Revenue - last 12 quarters

(Rs million)



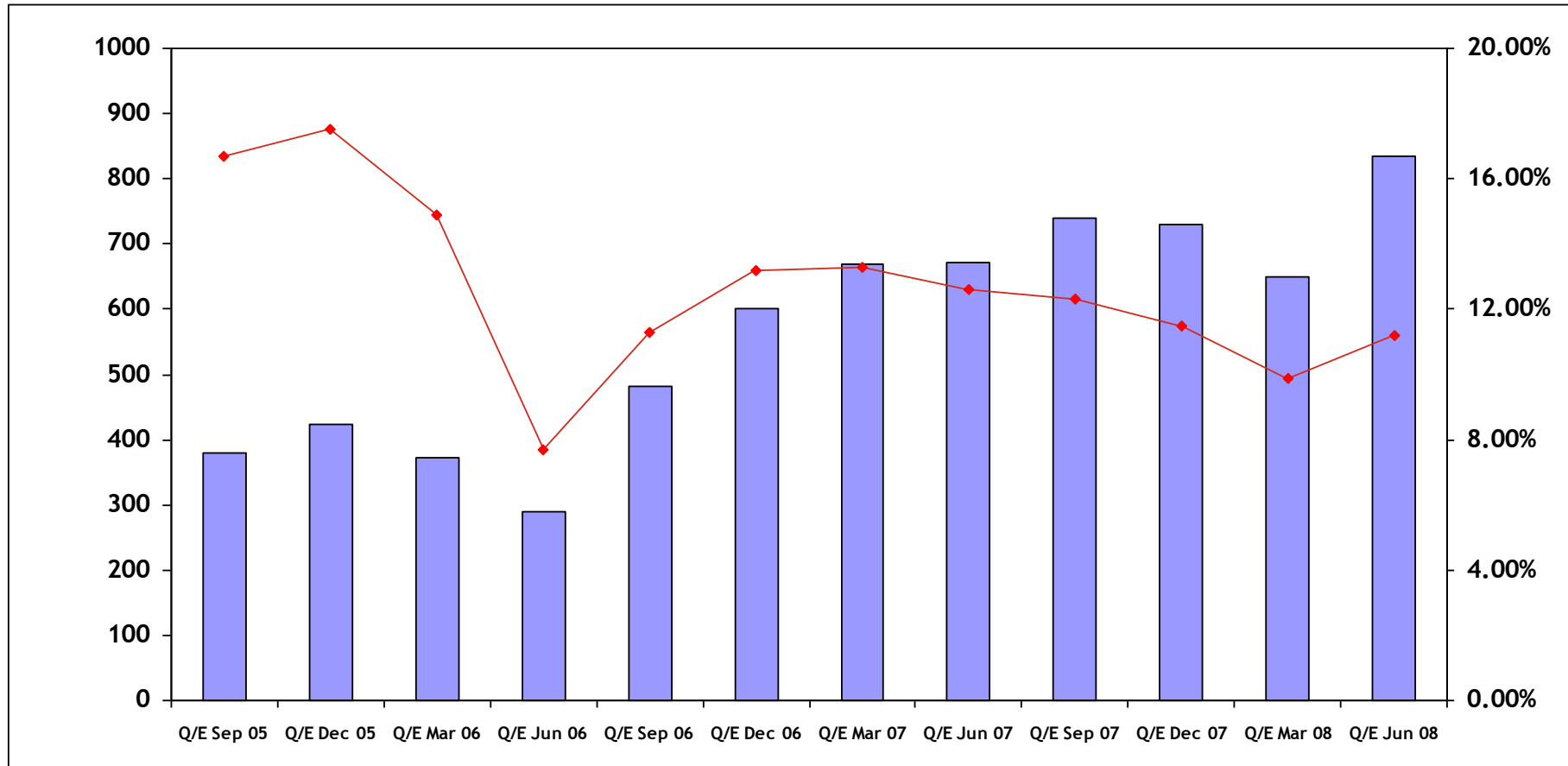
Applications	1,561.3	1,656.8	1,724.0	2,661.9	2,972.7	3,136.4	3,230.5	3,474.6	4,003.3	4,170.5	4,162.8	4,709.0
BPO	713.2	767.7	781.0	920.0	1,017.6	1,030.9	1,246.3	1,244.2	1,314.5	1,369.4	1,512.5	1,637.3
ITO	-	-	-	174.3	272.8	379.5	563.4	596.8	699.0	782.6	900.4	1,075.8
Total	2,274.5	2,424.5	2,505.0	3,756.2	4,263.1	4,546.7	5,040.2	5,315.6	6,016.8	6,322.5	6,575.7	7,422.1

* EDS India figures are consolidated w.e.f. 1 April 2006

Percentages indicate sequential growth over previous quarter.

Operating Profit - last 12 quarters

(Rs million)



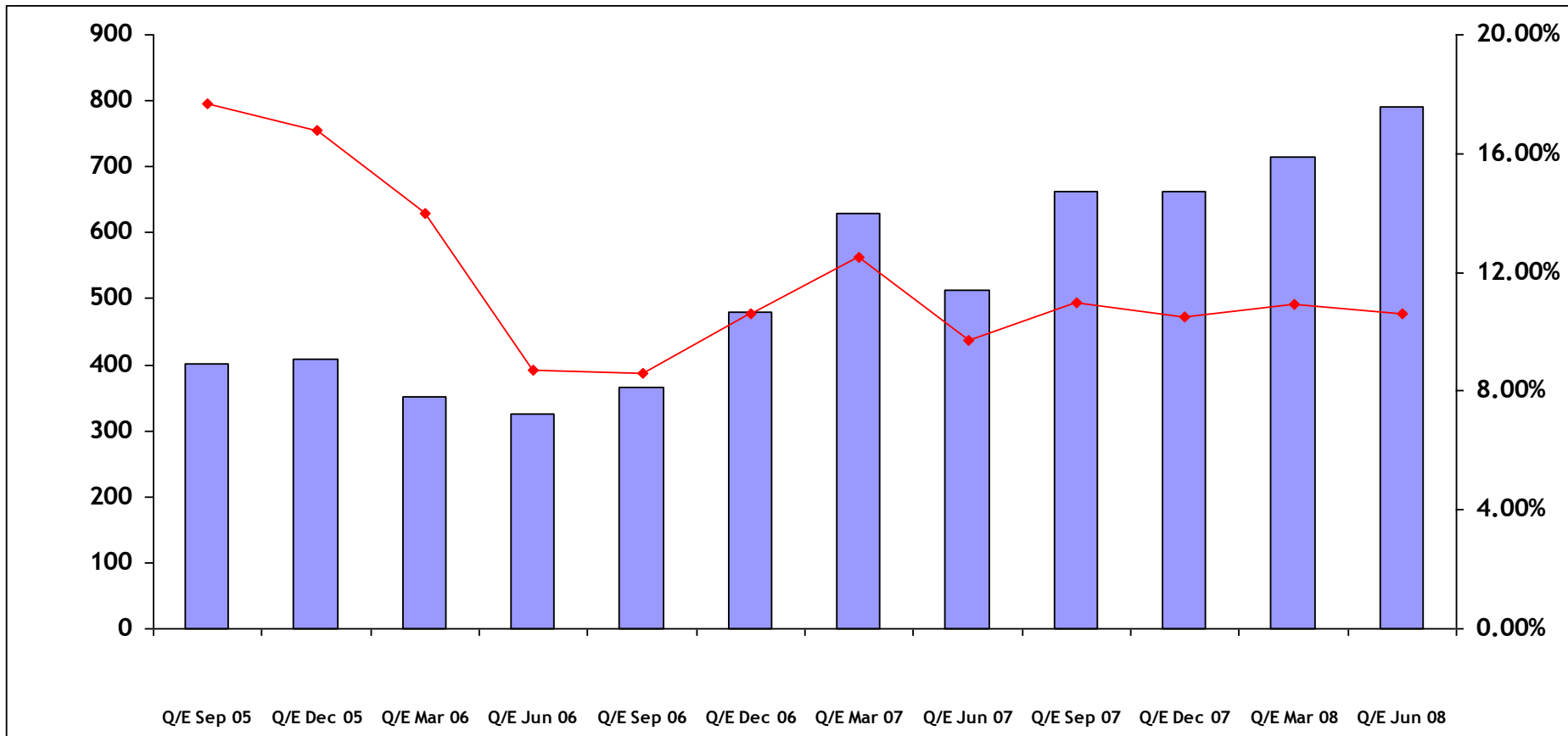
Total	380.5	423.9	372.5	290.3	482.7	600.4	670.0	672.4	738.6	729.9	650.8	835.0
Operating Margin	16.7%	17.5%	14.9%	7.7%	11.3%	13.2%	13.3%	12.6%	12.3%	11.5%	9.9%	11.2%

* EDS India figures are consolidated w.e.f. 1 April 2006

Percentages indicate operating profit as a percentage of revenue.

Net Profit - last 12 quarters

(Rs million)

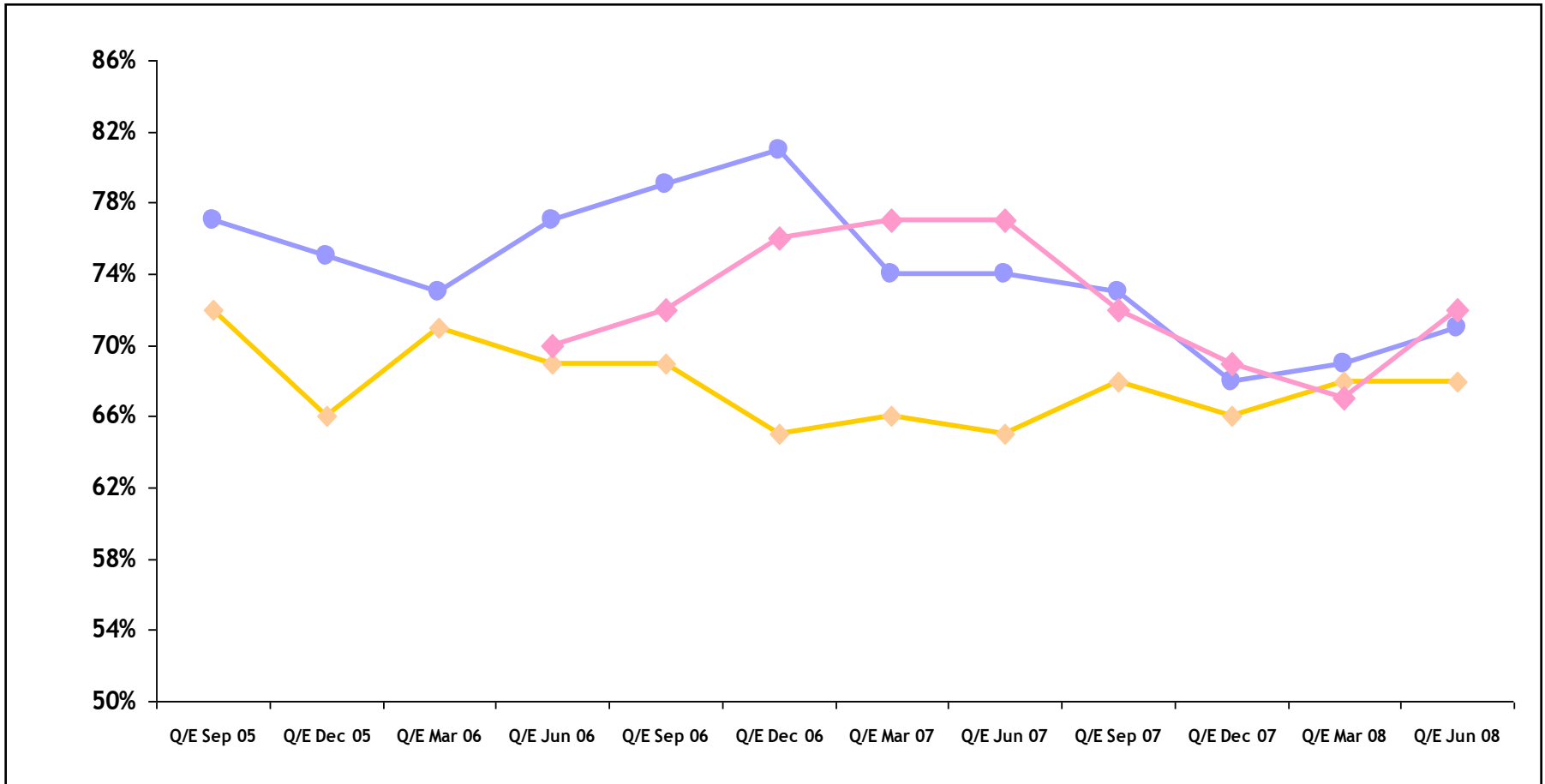


Total	401.6	408.4	351.6	326.0	365.6	480.4	628.5	513.0	663.1	662.5	714.2	790.1
Net Margin	17.7%	16.8%	14.0%	8.7%	8.6%	10.6%	12.5%	9.7%	11.0%	10.5%	10.9%	10.6%

* EDS India figures are consolidated w.e.f. 1 April 2006

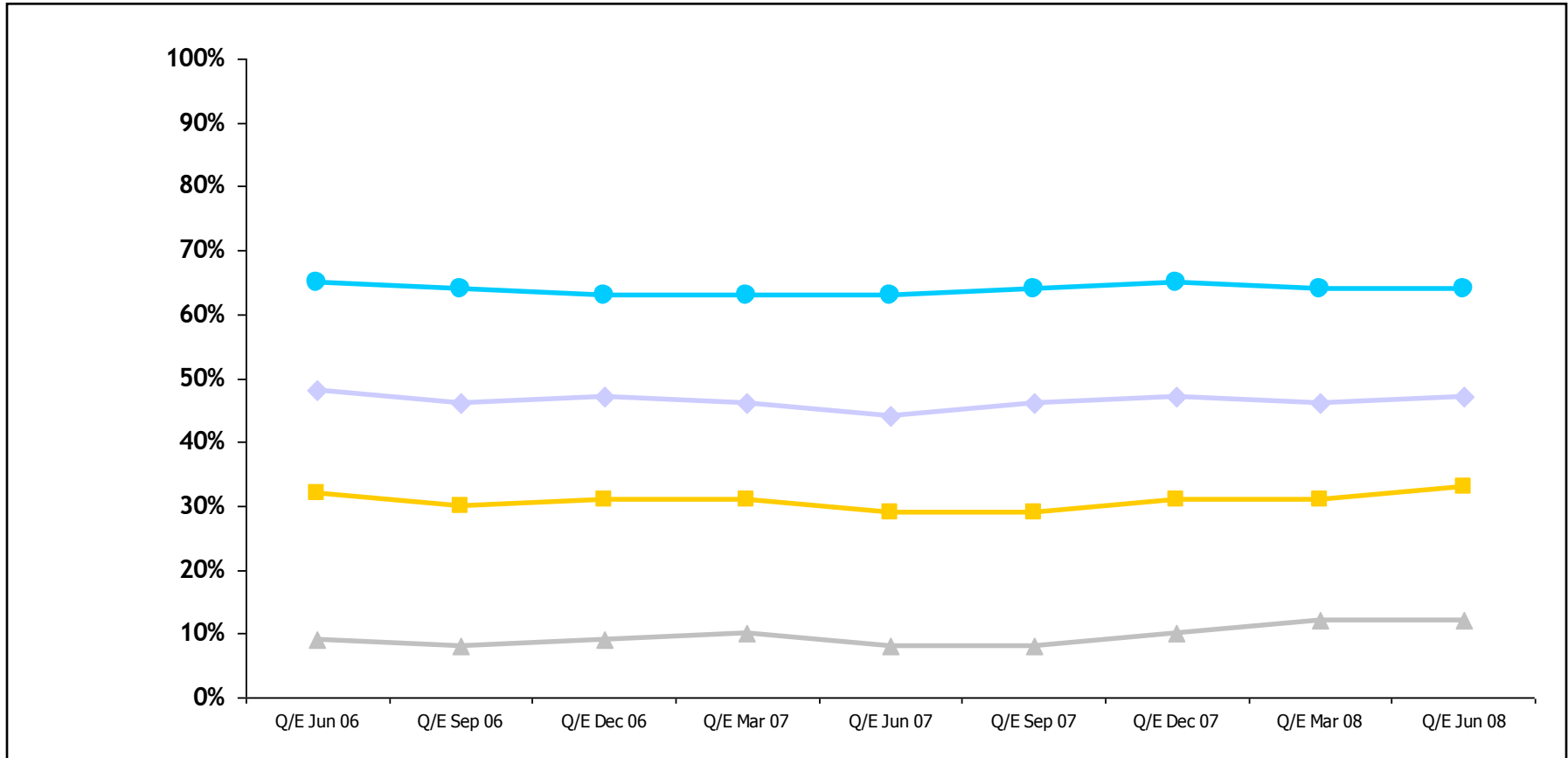
Percentages indicate net profit as a percentage of revenue.

Utilisation - last 12 quarters



Applications	77%	75%	73%	77%	79%	81%	74%	74%	73%	68%	69%	71%
BPO	72%	66%	71%	69%	69%	65%	66%	65%	68%	66%	68%	68%
ITO	-	-	-	70%	72%	76%	77%	77%	72%	69%	67%	72%

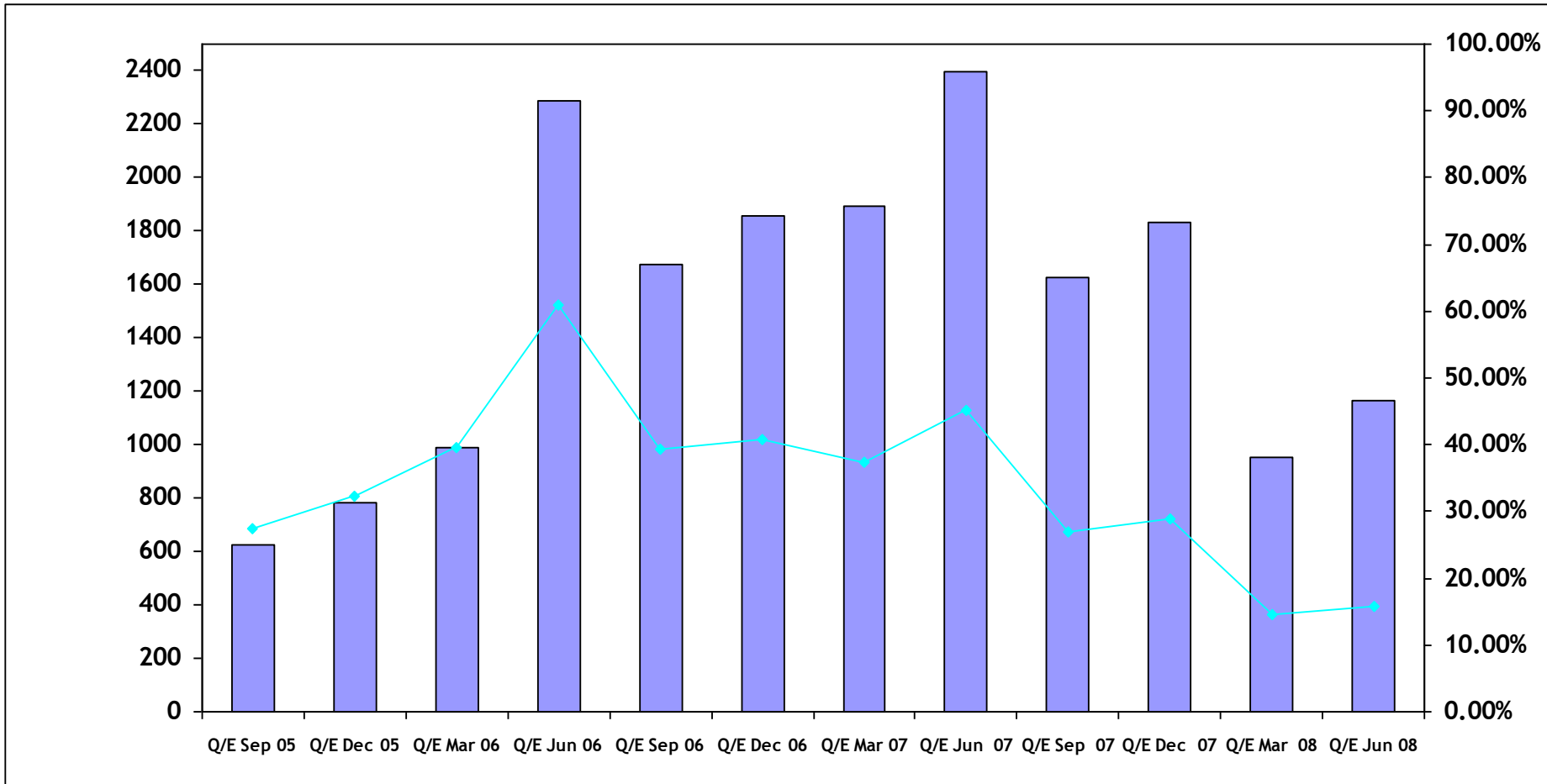
Group Client Concentration - last 9 quarters



Top 20 Clients	65%	64%	63%	63%	63%	64%	65%	64%	64%
Top 10 Clients	48%	46%	47%	46%	44%	46%	47%	46%	47%
Top 5 Clients	32%	30%	31%	31%	29%	29%	31%	31%	33%
Top Client	9%	8%	9%	10%	8%	8%	10%	12%	12%

Cash Balances - last 12 quarters

(Rs million)

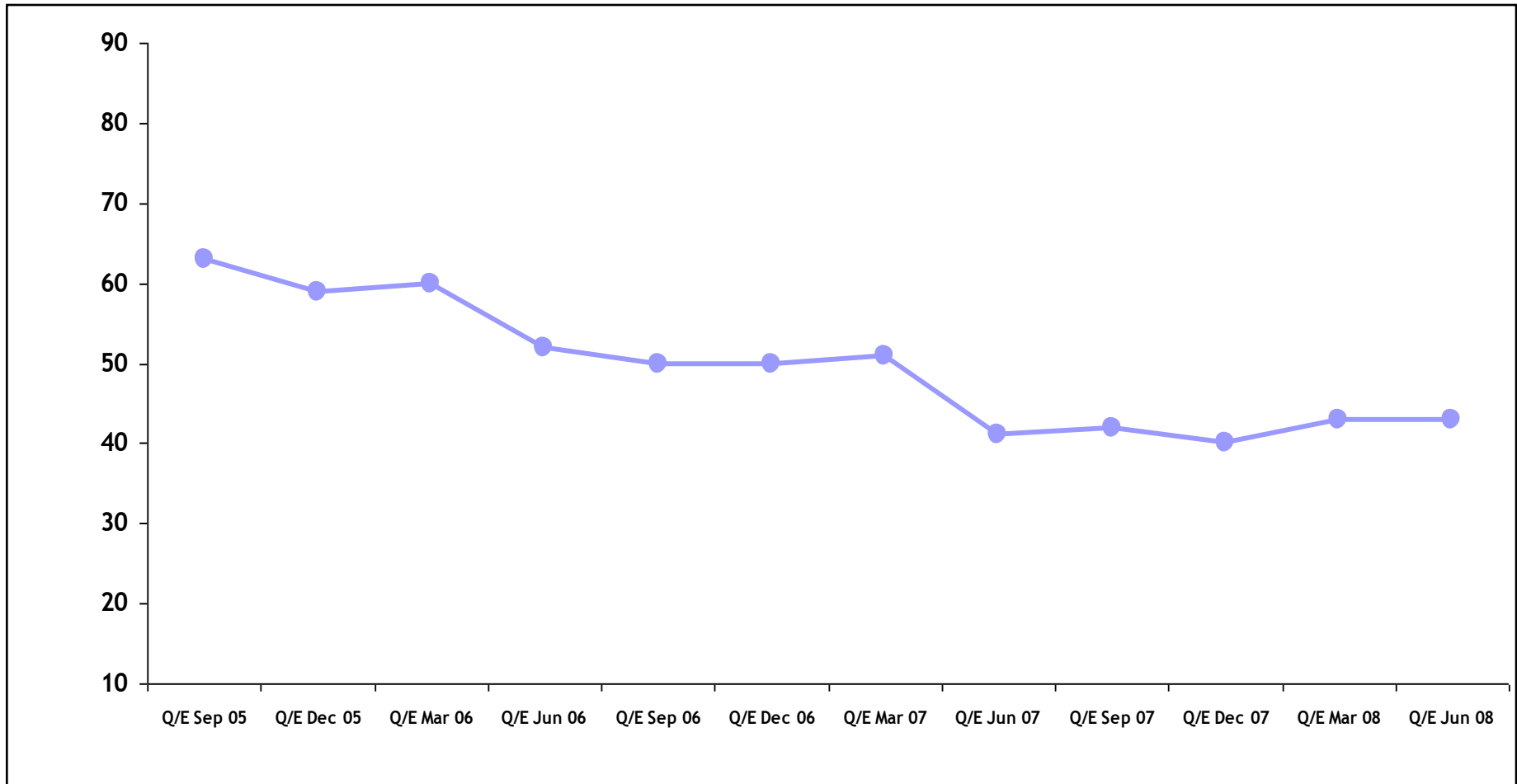


Group*	624.5	783.9	988.5	2,289.8	1,674.2	1,857.1	1,892.5	2,399.4	1,624.0	1,830.7	952.5	1,165.0
% of Revenue	27.5%	32.3%	39.5%	61.0%	39.3%	40.8%	37.5%	45.1%	26.9%	29.0%	14.5%	15.7%

* EDS India figures are consolidated w.e.f. 1 April 2006

Percentages indicate cash balances as a percentage of that quarters revenue.

Group Debtors Days Outstanding - last 12 quarters



Days	63	59	60	52	50	50	51	41	42	40	43	43
-------------	-----------	-----------	-----------	-----------	-----------	-----------	-----------	-----------	-----------	-----------	-----------	-----------