



Financials Presentation

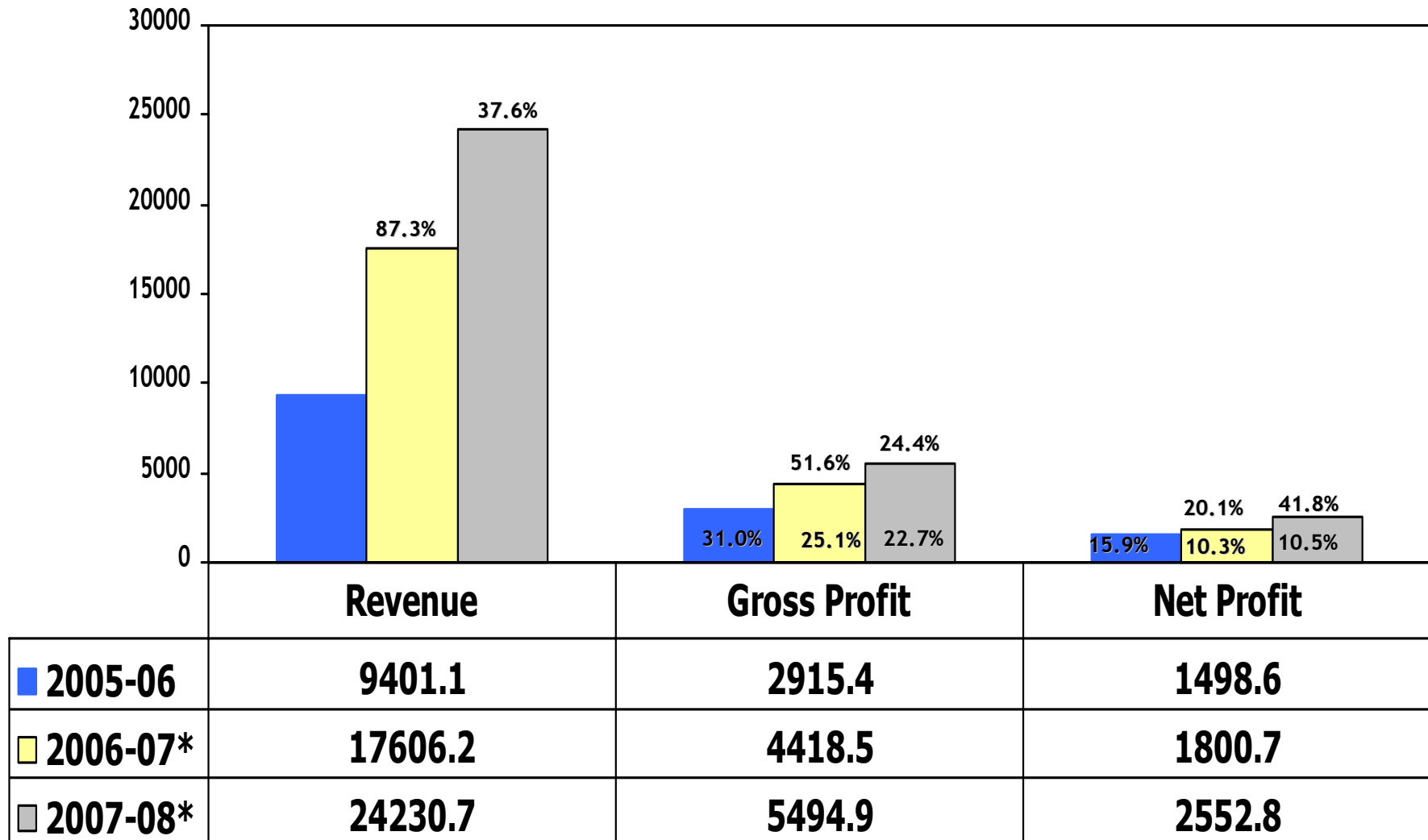
INR

Quarter ended 30 Sep 2008

Bangalore : 16 Oct 2008

2006-08 At A Glance - Group

(Rs million)

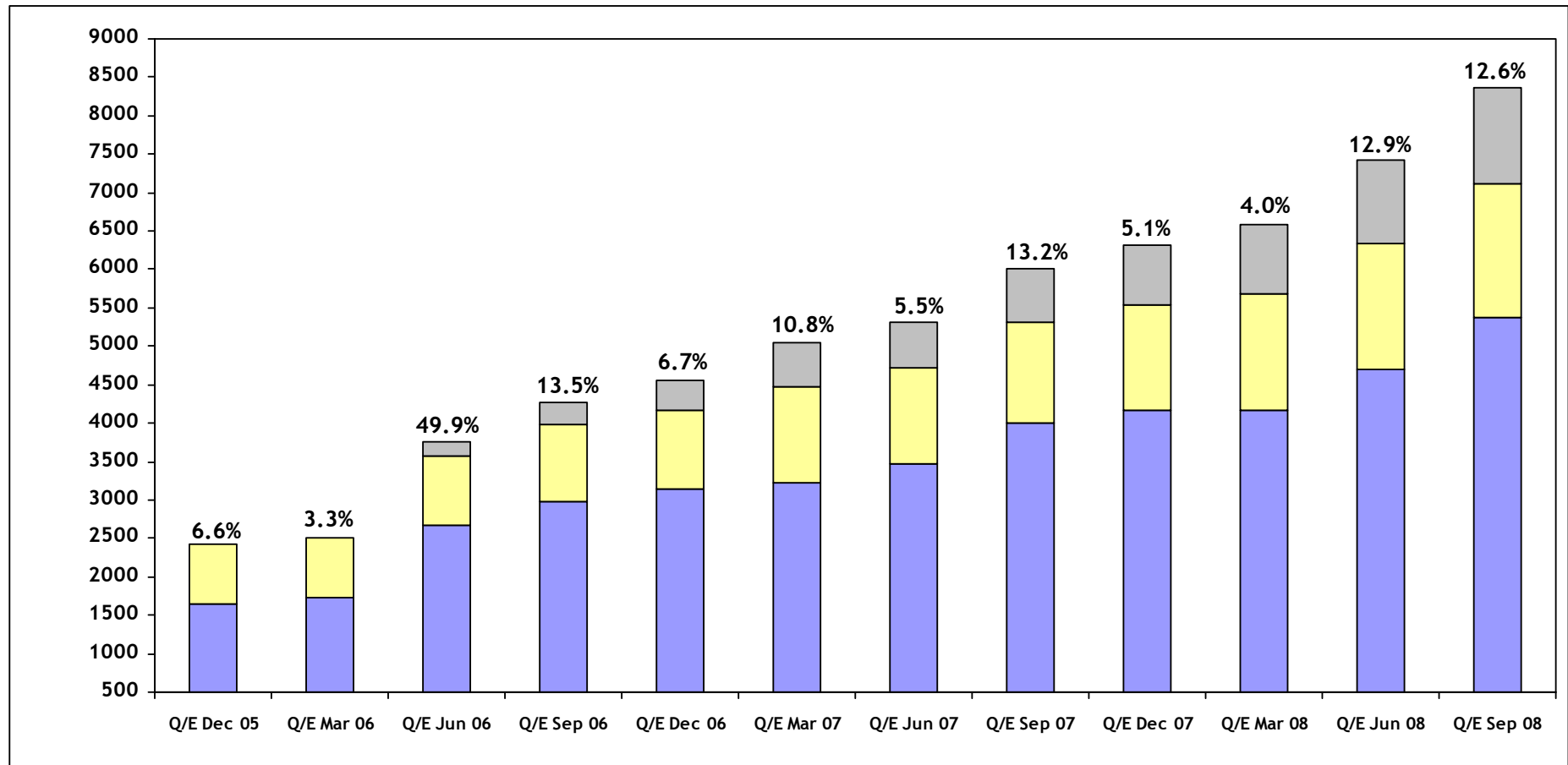


* EDS India figures are consolidated w.e.f. 1 April 2006

Financials Presentation – quarter ended 30 Sep 2008

Revenue - last 12 quarters

(Rs million)



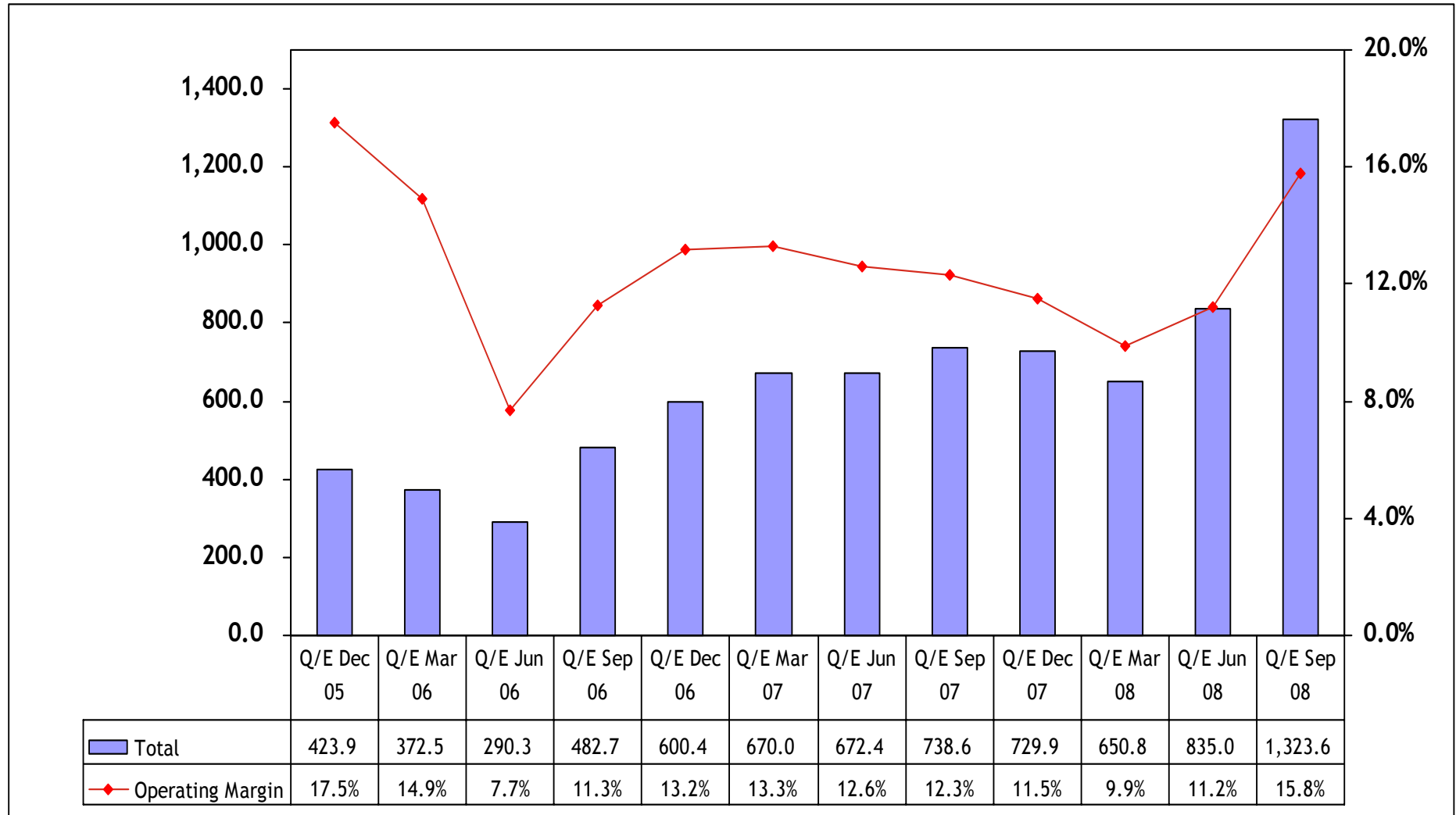
Applications	1,656.8	1,724.0	2,661.9	2,972.7	3,136.4	3,230.5	3,474.6	4,003.3	4,170.5	4,162.8	4,709.0	5,378.2
BPO	767.7	781.0	920.0	1,017.6	1,030.9	1,246.3	1,244.2	1,314.5	1,369.4	1,512.5	1,637.3	1,728.0
ITO	-	-	174.3	272.8	379.5	563.4	596.8	699.0	782.6	900.4	1,075.8	1,254.5
Total	2,424.5	2,505.0	3,756.2	4,263.1	4,546.7	5,040.2	5,315.6	6,016.8	6,322.5	6,575.7	7,422.1	8,360.7

* EDS India figures are consolidated w.e.f. 1 April 2006

Percentages indicate sequential growth over previous quarter.

Operating Profit - last 12 quarters

(Rs million)

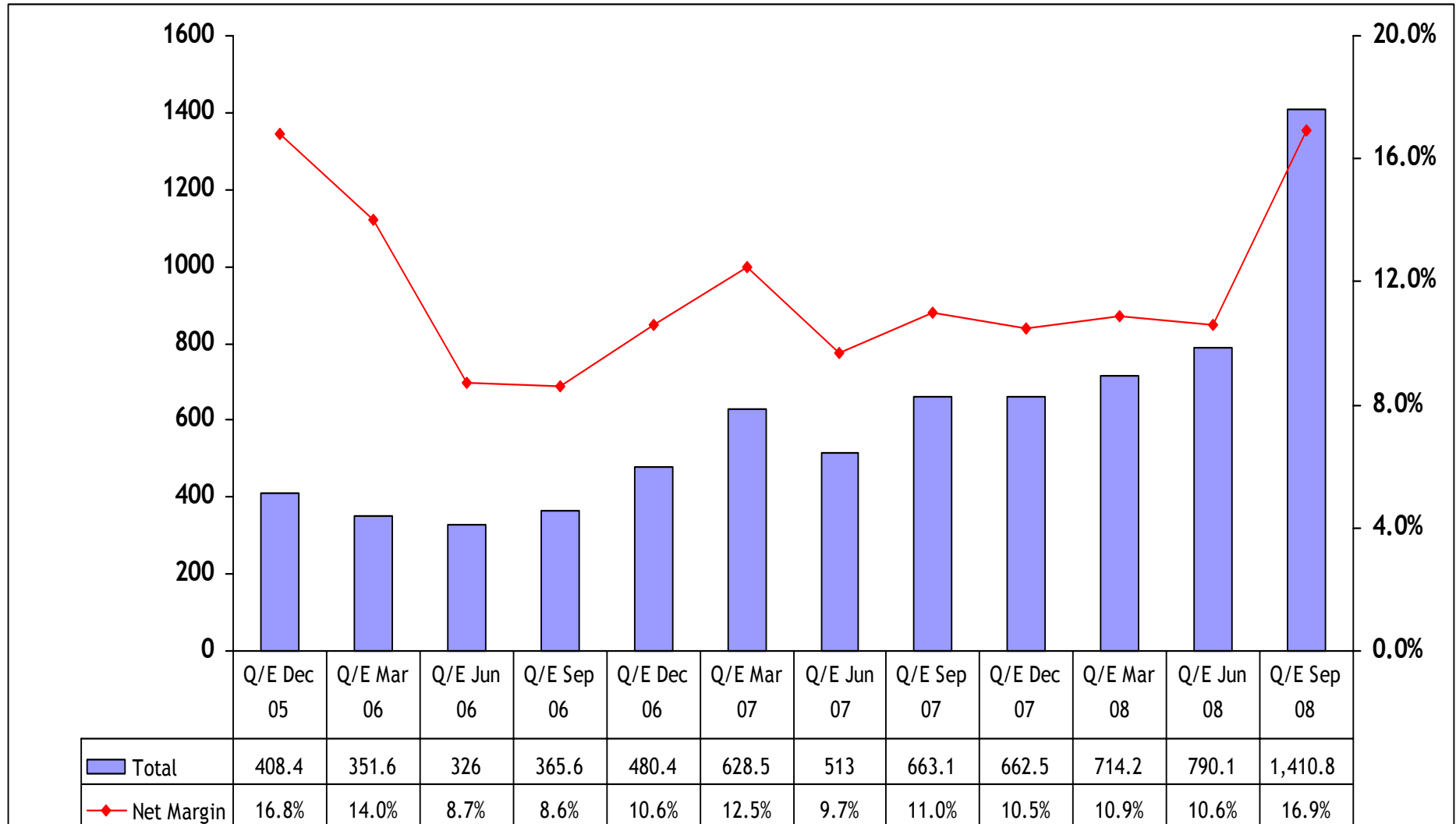


* EDS India figures are consolidated w.e.f. 1 April 2006

Percentages indicate operating profit as a percentage of revenue.

Net Profit - last 12 quarters

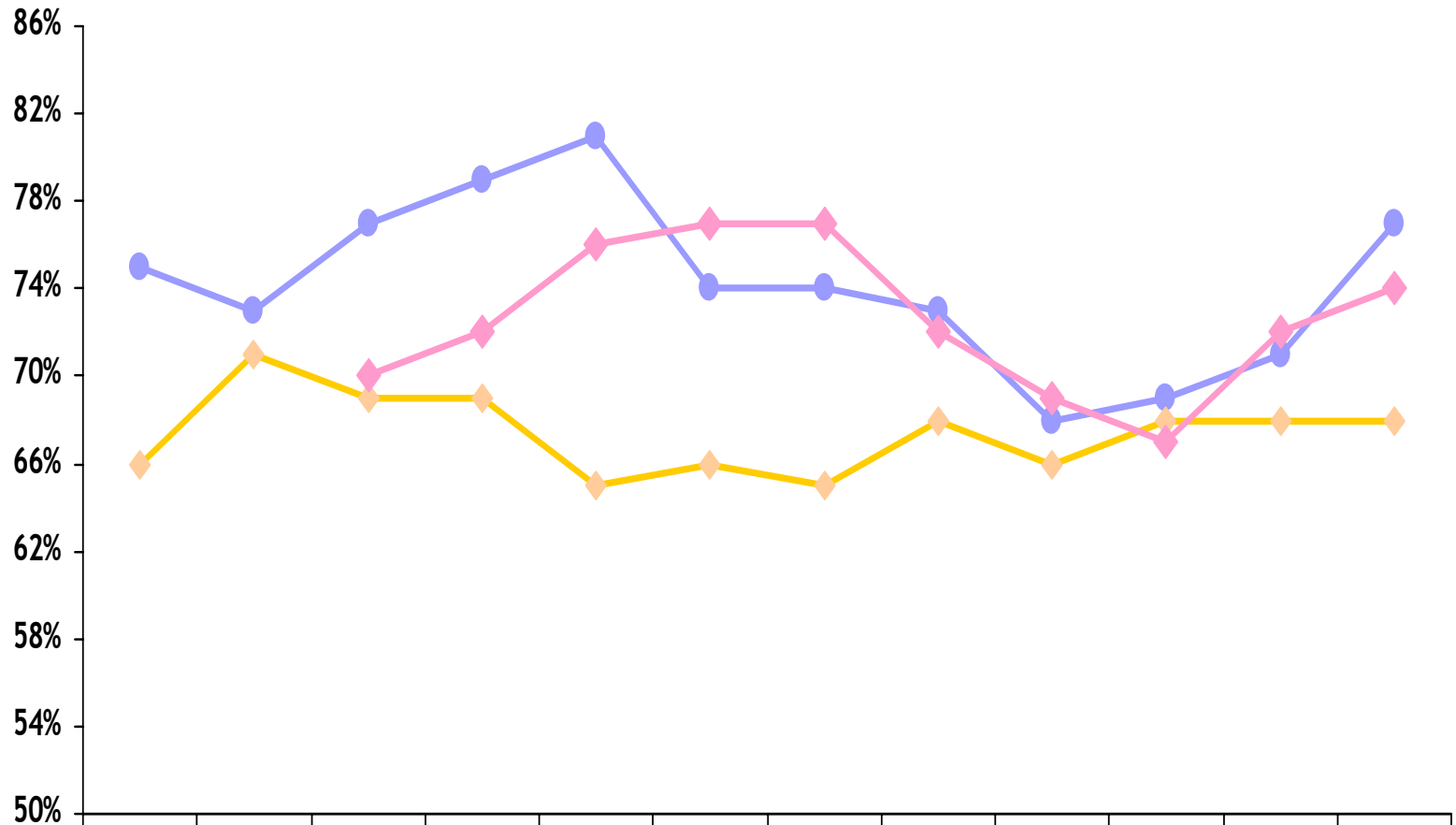
(Rs million)



* EDS India figures are consolidated w.e.f. 1 April 2006

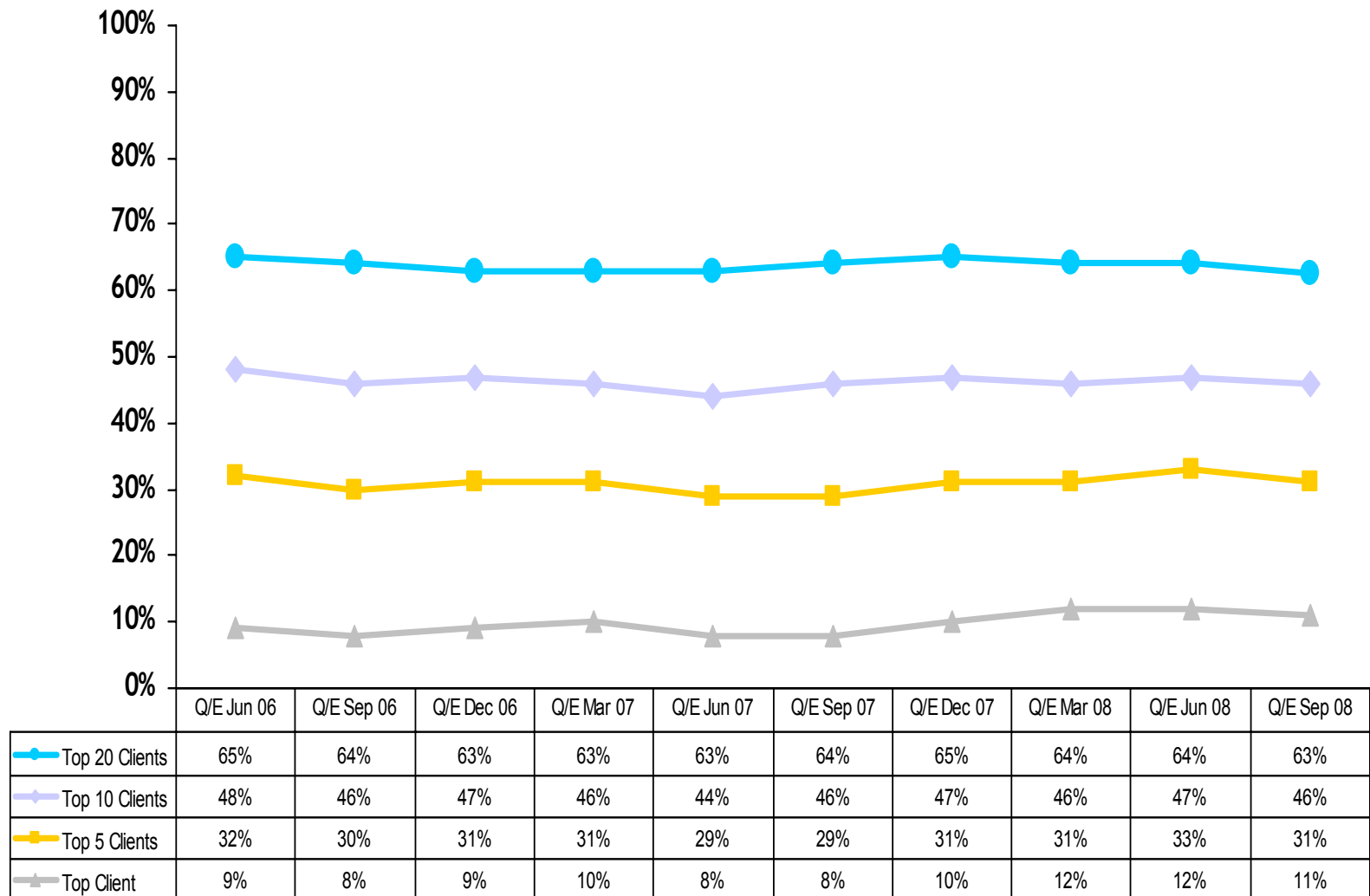
Percentages indicate net profit as a percentage of revenue.

Utilisation - last 12 quarters



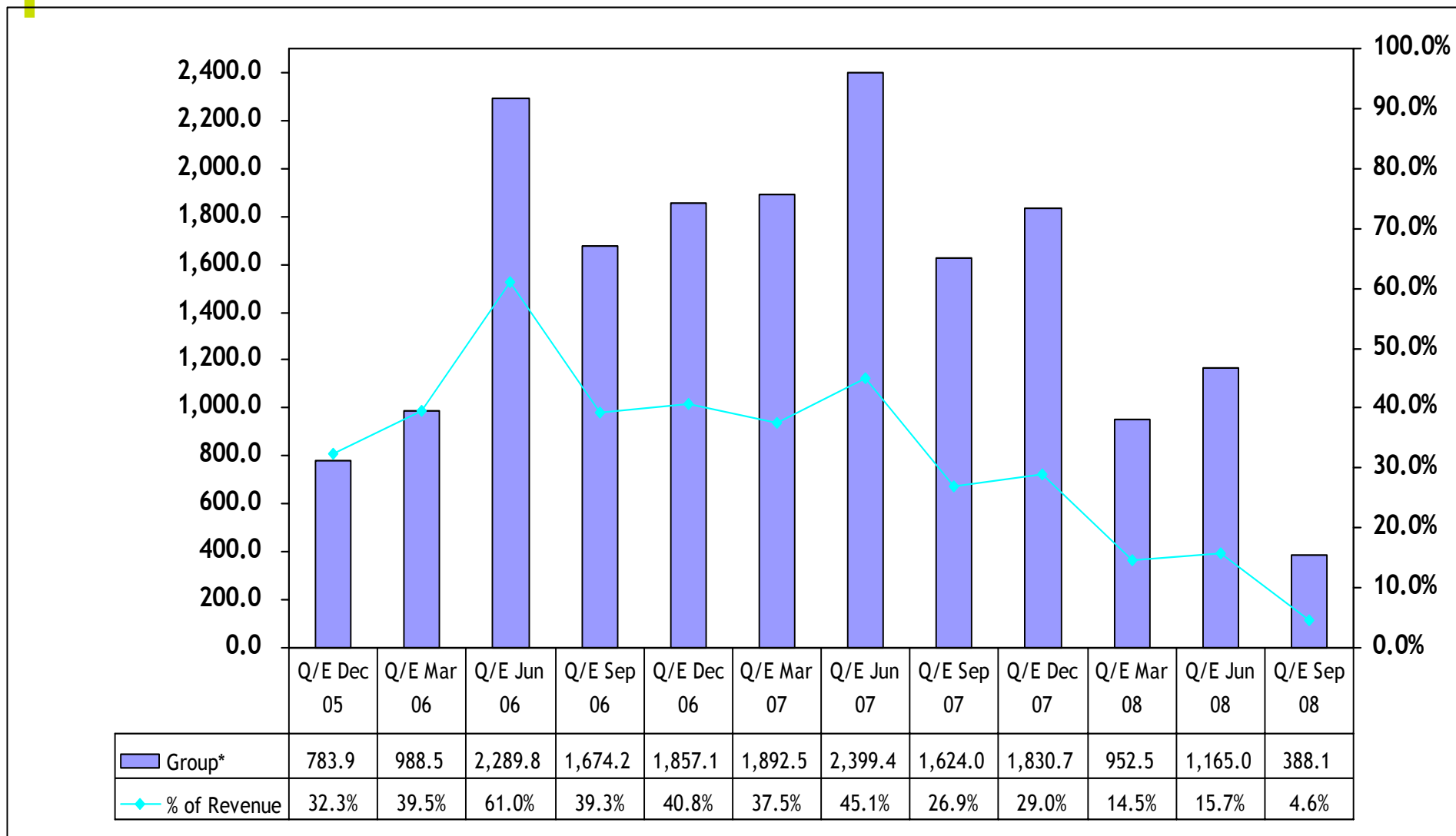
	Q/E Dec 05	Q/E Mar 06	Q/E Jun 06	Q/E Sep 06	Q/E Dec 06	Q/E Mar 07	Q/E Jun 07	Q/E Sep 07	Q/E Dec 07	Q/E Mar 08	Q/E Jun 08	Q/E Sep 08
Applications	75%	73%	77%	79%	81%	74%	74%	73%	68%	69%	71%	77%
BPO	66%	71%	69%	69%	65%	66%	65%	68%	66%	68%	68%	68%
ITO			70%	72%	76%	77%	77%	72%	69%	67%	72%	74%

Group Client Concentration - last 10 quarters



Cash Balances - last 12 quarters

(Rs million)



* EDS India figures are consolidated w.e.f. 1 April 2006

Percentages indicate cash balances as a percentage of that quarters revenue.

Group Debtors Days Outstanding - last 12 quarters

